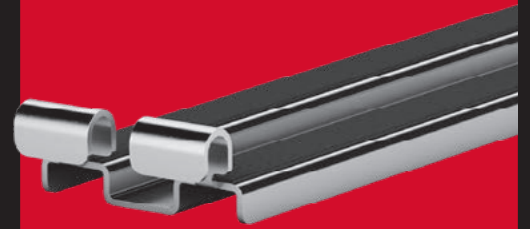


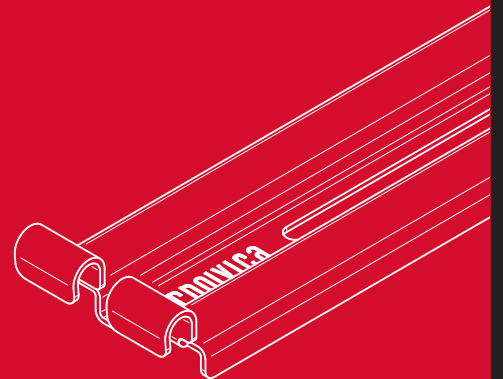
The cantilevered spacer is a galvanized steel profile, 34" long, to be applied to the head of the supports close to the wall to solve the problem of small cantilevered slabs, which would otherwise be suspended without support. In section, the spacer has grooves for housing the fins and is supplied with a .04" rubber grommet already applied to the surface rails. Thanks to its special shape, it acts both as a plate block and as a perimeter spacer, creating a .39" gap from the wall. It is also equipped with ferritories to facilitate water drainage.

## Specifications

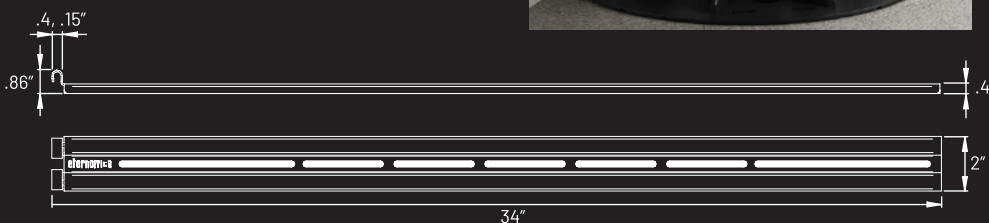


## SPECIFICATIONS

|            |                     |
|------------|---------------------|
| Material   | Galvanized Steel    |
| Dimensions | 34 x 2 x .35"       |
| Thickness  | Min. .78"           |
| Gap Width  | .4, .15             |
| Weight     | 0.88 lbs.           |
| Compatible | All Eterno Supports |



3310 N. Benzing Road  
Orchard Park, NY 14127



800.828.8424  
www.mrpsupports.com