



Our Porcelain Wind Pavers can be used to create rooftop patios, gathering spaces, and walking paths. When adhered to our MRP Paver Grate and fastened to our Black Series Pedestals, MRP Porcelain Wind Pavers have been tested to mitigate wind flows up to 165 mph. Made for outdoor use, these pavers are slip, chemical, and fade resistant, and a no maintenance product.

Specifications



PORCELAIN PAVERS

Material	Porcelain
Dimensions & Weight	12" x 24" x 3/4" (nominal); 11 3/4" x 23 1/2" x 3/4" (actual) / Weight: 15 lbs.
Colors	Various colors and styles available
Breaking Strength	≥ 250 lbf (ASTM C648)



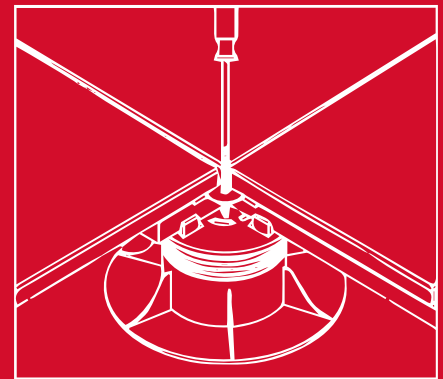
PAVER GRATE

Material	A blend of Nylon 66/6 with 30% glass
Dimensions & Weight	11.75" x 23.5" x .44" / Weight: 1.75 lbs. per grate



SYSTEM CONNECTIONS

Paver to Paver Grate	3M 550 adhesive
Paver Grate to Pedestal	MRP Fastening Kit
Wind Uplift Resistance	350 psf (per vacuum testing by independent lab)
Wind Flow Resistance	165 mph (per testing by independent lab)



Paver Grate Fastening Kit
Screw & Washer

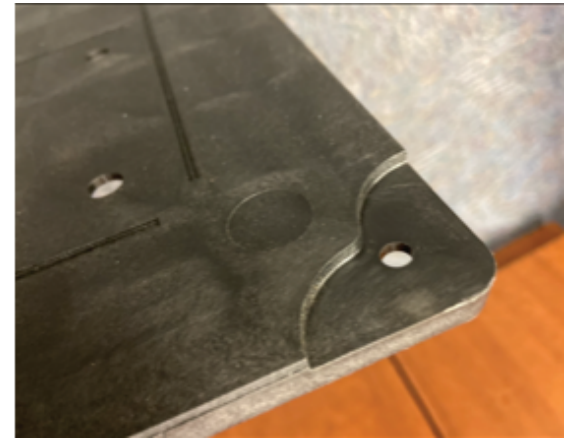
3310 N. Benzing Road
Orchard Park, NY 14127

800.828.8424
www.mrpsupports.com

PORCELAIN WIND PAVER TO PAVER GRATE ADHESION Instructions



MRP Paver Grate enhances impact resistance for porcelain pavers in pedestal applications. It also provides a structural surface for loose laid pavers on deck pedestals. Engineered to attach to the black series pedestals, the MRP Paver Grate creates a stable and secure foundation and mitigates wind uplift resistance.



ADHERING PAVER TO PAVER GRATE PRIOR TO INSTALLATION:

**STEP
#1**

PAVER GRATE PLACEMENT

Place MRP paver grate on a clean, level surface, so that the solid side is face up and the waffle side is face down.

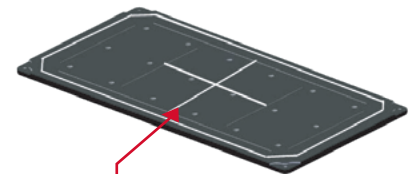


This Side Up

**STEP
#2**

ADHESIVE

Run a 1/4" diameter bead of 3M 550 adhesive 3/4" from the edge and around the perimeter of the grate and the bead lines in between of grate. **IMPORTANT:** For proper adhesion and performance, adhesive must be applied exactly as shown.

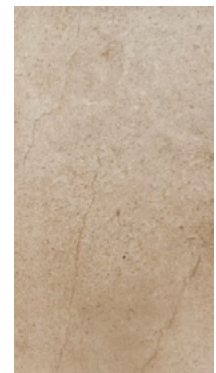


**Adhesive
Recommended
Bead Line**

**STEP
#3**

PAVER PLACEMENT ON PAVER TRAY

Place the Porcelain Tile squarely onto the adhesive side of the MRP Paver Tray, carefully aligning by hand to make sure that the paver does not extend beyond any edge of the tray.



**STEP
#3**

ASSEMBLY STACKING

Repeat the first three steps to create a MRP Paver Tray Assembly. Stack assemblies no more than (5x) assemblies high. Let them remain stacked for 24 hours to allow for the adhesive to cure, before handling (SEE MRP FOR QUICKER CURE TIMES).

800.828.8424
www.mrpsupports.com