

## Rubiks

The MRP Supports planter collection includes a variety of shapes with multiple design options and features. Style options range from standard to modern and contemporary.

Our collection is categorized by straightforward shape names to get you to the right selection quickly.

Every planter is made to order regardless of size or quantity.



**STANDARD**



**GROOVE**



**CROSS**



**SURFACE**



**RECESSED PANEL**



**LASER CUT**

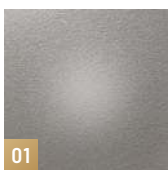


**TOE KICK**

## MATERIALS AND FINISHES

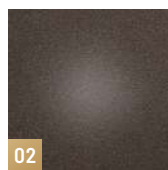
Presented below are popular metal choices and finishes they are commonly paired with. Other custom combinations should be clearly specified.

### ALUMINUM, STEEL & STAINLESS STEEL powder-coated (Custom Color match available)



01

Silver



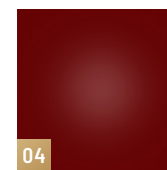
02

Metallic Bronze



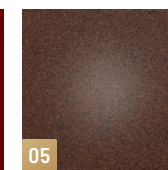
03

Metallic Charcoal



04

Red



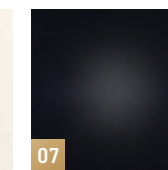
05

Rust



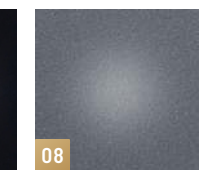
06

White



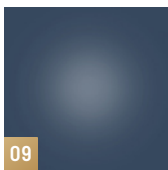
07

Matte Black



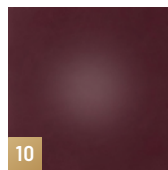
08

Wrinkle Grey



09

Blue



10

Burgundy



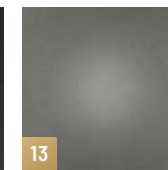
11

Bronze



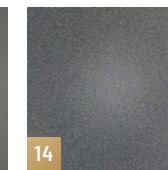
12

Texture Black



13

Grey



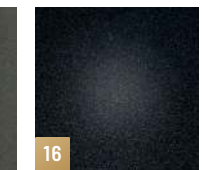
14

Charcoal



15

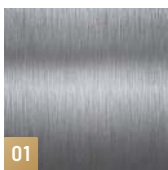
Grey Brown



16

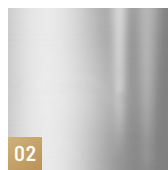
Wrinkle Black

### STAINLESS STEEL blackened or polished (call for pricing)



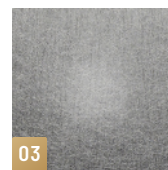
01

Brushed



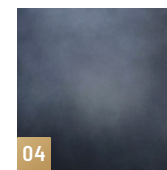
02

Polished



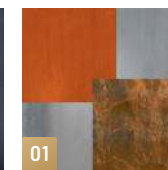
03

Non Directional



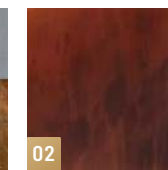
04

Blackened



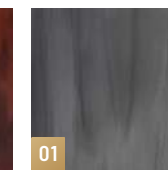
01

Natural



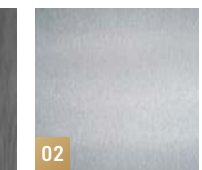
02

Pre Weathered



01

Zinc Patina



02

Brushed

### CORTEN STEEL natural rust finish

### ALUMINUM zinc patina or brushed

## SIZE

The RUBIKS planter is available in 8 standard sizes . See the chart below for our standard sizing. Alternately, specify your preferred size, with supporting easy to adjust CAD files.

**S**

16" L x 16" W x 16" H  
20" L x 20" W x 20" H  
24" L X 40" W X 20" H

**M**

24" L x 24" W x 24" H  
28" L x 28" W x 28" H  
36" L x 36" W x 24" H

**L**

36" L x 36" W x 36" H  
48" L x 48" W x 48" H

