

ROUND

The MRP Supports planter collection includes a variety of shapes with multiple design options and features. Style options range from standard to modern and contemporary.

Our collection is categorized by straightforward shape names to get you to the right selection quickly. Every planter is made to order regardless of size or quantity.

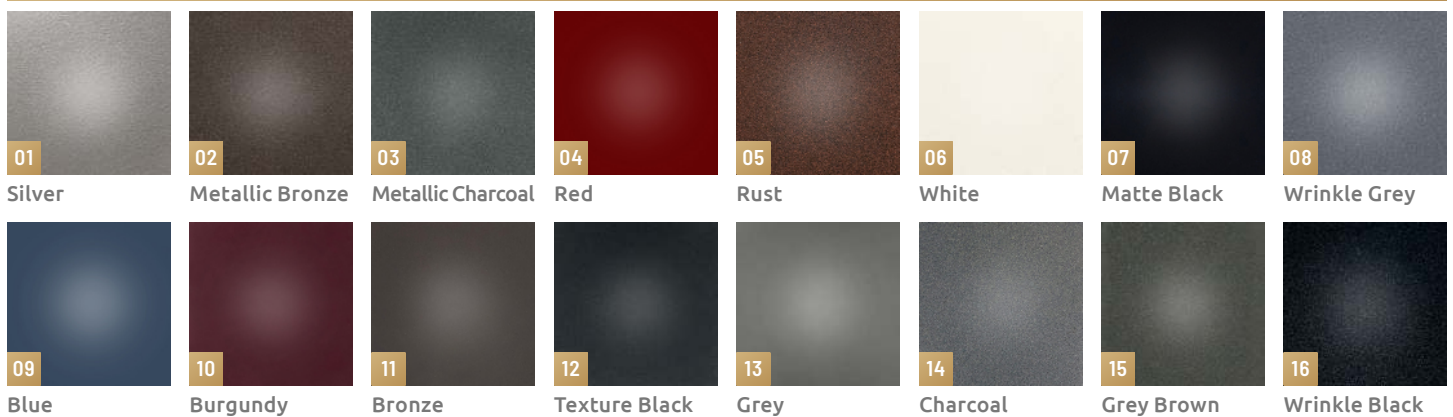


STANDARD

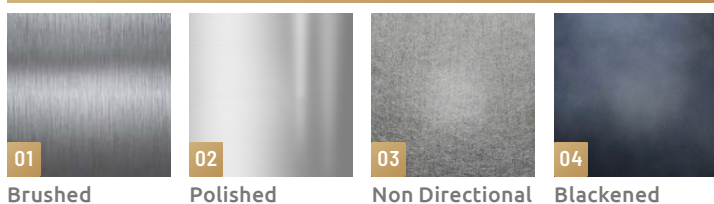
MATERIALS AND FINISHES

Presented below are popular metal choices and finishes they are commonly paired with. Other custom combinations should be clearly specified.

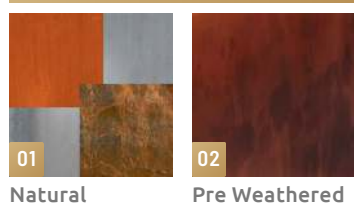
ALUMINUM, STEEL & STAINLESS STEEL powder-coated



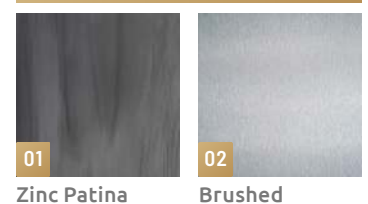
STAINLESS STEEL blackened or polished



CORTEN STEEL natural rust finish



ALUMINUM zinc patina or brushed



SIZE

The ROUND planter is available in 8 standard sizes with supporting CAD files. See the chart below for our standard sizing. Alternately, specify your preferred size, with supporting easy to adjust CAD files.

18"H

18" Dia x 18"H
24" Dia x 18"H

24"H

18" Dia x 24"H | 24" Dia x 24"H
36" Dia x 24"H | 48" Dia x 24"H

36"H

18" Dia x 36"H
36" Dia x 36"H

